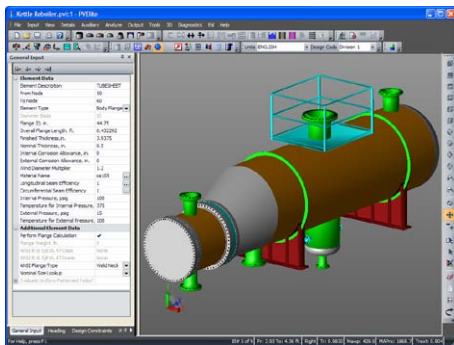
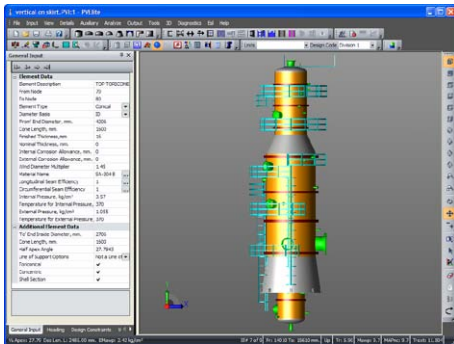




Intergraph PV Elite



PV Elite is an efficient analysis tool for a wide range of applications.

www.ferncc.com
sales@ferncc.com

Telephone: +44 (0)1332 780790
 Fax: +44 (0)1332 780788



© Copyright 2010 Fern Computer Consultancy Ltd. All Rights Reserved.
 Fern is an authorised distributor of Intergraph Analysis Solution Group in Western Europe. Intergraph, the Intergraph logo, CAESAR II, CADWorx, PV Elite and TANK are registered trademarks or trademarks of Intergraph. Windows and Vista are trademarks of Microsoft Corporation. AutoCAD is a registered trademark of Autodesk, Inc.

Intergraph® PV Elite™ is a complete solution for vessel and heat exchanger design, analysis and evaluation. Users of PV Elite have designed equipment for the most extreme uses and have done so quickly, accurately and profitably.

Data Collection

PV Elite makes defining pressure boundary conditions for vessels and exchangers easy, even for load sets that require significant data input. PV Elite streamlines data entry by breaking the input down into sensible subsets. Help on any input item is only a keystroke away.

Graphics

PV Elite's graphical representation of analysis models helps ensure confidence in the input and results. With PV Elite, analysis models can be viewed and manipulated with complete ease.

Analysis Options

PV Elite performs calculations in accordance with ASME Section VIII Divisions 1 & 2, PD 5500 and EN 13445. Rules from API 579 (Fitness for Service) are also included for evaluating the current state and remaining life of existing vessels.

Output and Reports

To simplify inspection requirements, PV Elite lists the most important equations such as required thickness and maximum allowable working pressure (MAWP) and also groups results by type (e.g. internal pressure, external pressure, bending stress, nozzles and flanges). Overall results are summarized where the element or detail controlling the overall vessel MAWP is identified.

Materials and Codes

PV Elite is a global package with international code rules plus extensive region-specific content. Vessel material definitions, piping and steel component data, local wind loads and local seismic loads of many regional markets are all included.

Interfaces

PV Elite interfaces with other popular software packages for finite element analysis, foundation design and drafting. PV Elite also shares a bi-directional link to Intergraph CADWorx® Equipment module and Intergraph PV Fabricator™.

Intergraph PV Fabricator

PV Fabricator has advanced tools for the accurate and speedy production of fabrication deliverables of pressure vessels and heat exchangers. When linked to PV Elite, PV Fabricator can deliver up to 80% savings over existing drafting methods.

Application Areas

Process and Plant Design, Piping, Equipment, Petrochemical, Chemical, Power, Offshore, Food, Beverage, Brewing, Pharmaceutical, Water Treatment and Shipbuilding.

Technical Specs

Microsoft Windows XP Pro or Windows Vista Ultimate (minimum)

Features

- Design and Analysis of Vessel, Exchanger and Tubesheet
- Rectangular and Non-Circular Vessel Analysis
- Individual Component Analysis
- Cutting-edge Graphics
- Design Tools and Wizards
- Comprehensive Error Checking
- Saddle, Leg and Skirt Design
- Analysis for Horizontal Shipping of Vertical Vessels
- User-definable Reports
- Wind Analysis
- Seismic Analysis
- International Vessel Codes
- Extensive Material Databases
- Steel Databases and Modeling
- Links to Intergraph CADWorx Equipment and Intergraph PV Fabricator™