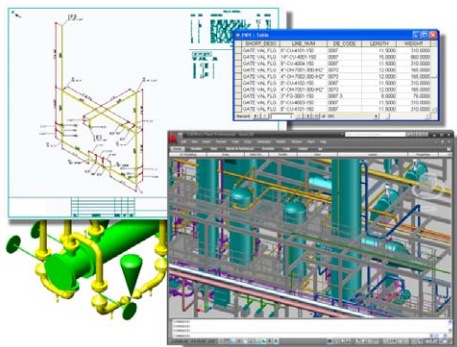




# Intergraph CADWorx Plant



CADWorx Plant provides the most full-featured and cutting-edge tools for efficient and accurate design.

Intergraph® CADWorx® Plant includes the most complete range of tools for efficient plant design. CADWorx Plant is easy to learn and has helped thousands of corporations create revenue-earning deliverables quicker and more accurately.

For Engineering Contractors and Owner Operators alike in the process and power industries, CADWorx Plant provides a comprehensive, flexible and scalable solution for today's engineering projects; from conceptual front end studies through detail design and into operation.

With over 2000 customers and backed by quality worldwide support, CADWorx is a proven solution which enables projects to be delivered on time at the lowest cost and lowest risk.

If you depend on AutoCAD as your deliverables, CADWorx Plant is the only future proofed plant design solution with true DWG compatibility on the market today.

## Industry Applicability

CADWorx is suitable for all mid-market companies (defined as up to €250million CAPEX/OPEX) who are executing projects in Process and Plant Design, Piping, Equipment, Steelwork, Petrochemical, Chemical, Power, Offshore, Food, Beverage, Brewing, Pharmaceutical, Water Treatment, Building Services, Ship Building and Architecture.

## Applications for Engineers by Engineers

Designed by engineers for engineers, CADWorx Plant provides the broadest set of intelligent multi-discipline based applications as one integrated solution.

## Features

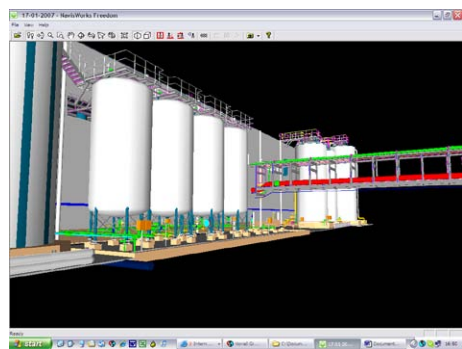
- Efficient Plant Design
- Structural Steel and Equipment
- Ducting and Cable Trays
- Piping Specifications
- Automatic Isometrics
- Collision Checking
- Databases Links
- Model and P&ID Synchronization
- Walkthrough Capabilities
- Links to Stress Analysis and Stress Isometrics

## Flexibility and Scalability: Demand more from your projects at lower cost and risk

In any engineering project, the costs of design need to be controlled to ensure project profitability - from project start-up to handover to operations. CADWorx quite simply enables projects to be executed at minimum cost and overhead. This is achieved through:

- Training requirements that are lowest in the industry, with exceptionally easy to use and productive applications, with a high degree of automation available.
- Project start up and administration costs that are significantly lower than any system on the market; with ease of definition in project configuration and customization.
- Database choice appropriate to project; utilize any ODBC compliant database.
- Comprehensive library of industry based specifications, easily administered and modified.
- Data integrity is assured; generate drawings from database and database from drawings.
- Pricing model that provides flexibility to the project, at a cost you will find hard to beat for the capability available.
- Open to legacy data and interoperability with most leading 3D Design solutions.

## Model vs. Reality

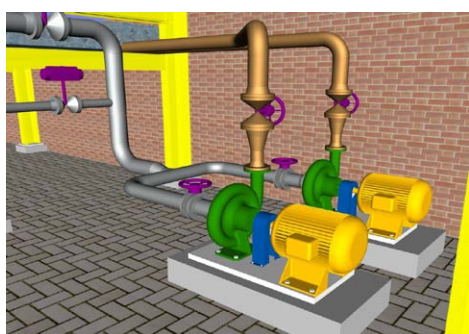
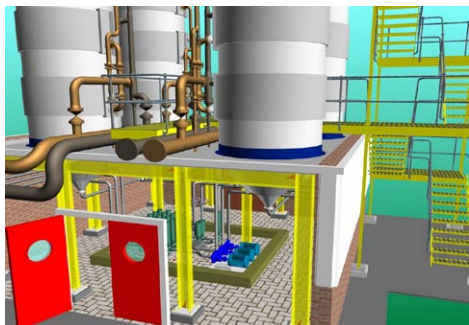


"We took the software to the nth degree and customised it to deliver everything we wanted." Briggs UK

## Piping Design

Piping design could not be easier. Specification driven, the piping application enables regular and complex pipe lines to be designed in 2D or 3D modes. With full intelligence and connectivity, piping objects can be positioned in coordinate space or relative to other engineering objects. With dynamic copy, drag, mirror editing tools, it's a breeze to modify. With links to CADWorx P&ID Professional, data is consistently being maintained between applications.

# Plant Design How AutoCAD Users Expect



"Because CADWorx is completely integrated with AutoCAD, it was clear that our learning curve would be far shorter than for any other system." Exterran (UK) Ltd.



[www.ferncc.com](http://www.ferncc.com)  
[sales@ferncc.com](mailto:sales@ferncc.com)

Telephone: +44 (0)1332 780790  
Fax: +44 (0)1332 780788



© Copyright 2010 Fern Computer Consultancy Ltd. All Rights Reserved.  
Fern is an authorised distributor of Intergraph Analysis Solution Group in Western Europe. Intergraph, the Intergraph logo, CAESAR II, CADWorx, PV Elite and TANK are registered trademarks or trademarks of Intergraph. Windows and Vista are trademarks of Microsoft Corporation. AutoCAD is a registered trademark of Autodesk, Inc.

## Efficient Plant Design

CADWorx Plant allows for quick and easy creation of fully intelligent 3D plant models. Because CADWorx models are AutoCAD-based, they offer unparalleled flexibility and collaboration.

## Structural Steel and Equipment

Powerful and intuitive structural steel and equipment modeling capabilities are included to provide the most complete plant models.

## Ducting and Cable Trays

In addition to steel and equipment modeling, HVAC ducting and cable tray routines are also built-in. Square, rectangular, round and oval shapes, with transitions, are all available.

## Piping Specifications

Hundreds of ready-to-use specifications in metric and imperial formats are included that reference data files of over 60,000 parametrically-driven components.

## Automatic Isometrics

Automatic isometrics can be produced from piping layouts or project databases. CADWorx Plant Professional includes ISOGEN for automatic isometric production.

## Collision Checking

CADWorx Plant Professional offers built-in clash detection. Collisions can be detected in the current model and also against any externally referenced files. Options allow clashes to be reported 'on-the-fly' or at any time during the design process.

## Databases Links

CADWorx Plant allows users to create accurate, user-configurable bills of material in the most popular database formats. The optional live database links in CADWorx Plant Professional provide real-time design status and valuable information backup.

## Model and P&ID Synchronization

When used in conjunction with the live project database, CADWorx Plant Professional allows for intelligent component checking against project P&ID's that were created using CADWorx P&ID Professional.

## Walkthrough Capabilities

CADWorx Design Review is included for model review and true 3D design collaboration.

## Links to Stress Analysis and Stress Isometrics

CADWorx Plant has bi-directional links to Intergraph CAESAR II®, the world's most widely used stress analysis package.

## Technical Specs

AutoCAD compatible  
Microsoft Windows XP Pro or  
Windows Vista Ultimate (minimum)

## Versions

### Professional

- Intelligent 3D Piping Design
- Specification-driven Design
- CADWorx Steel Professional
- CADWorx Equipment \*
- Ducting/Cable Trays
- Collision Checking
- ISOGEN Isometrics
- Live Database Links
- Model/P&ID Synchronization
- CADWorx Design Review
- Links to Stress Analysis \*\*

### Standard

- Intelligent 3D Piping Design
- Specification-driven Design
- CADWorx Steel
- Equipment
- Ducting/Cable Trays
- Automatic Isometrics
- Export to External Databases
- Links to Stress Analysis \*\*

\* Links to Intergraph PV Elite™ and PV Fabricator™

\*\* Links to Intergraph CAESAR II®